

Finishes

FABRICS - 10 collections = 100 colors

VELVET Collection - 13 colors



Creme



Sand



Mustard



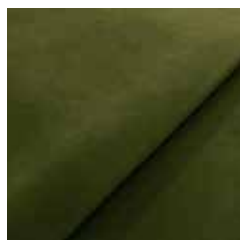
Sierra



Red Brick



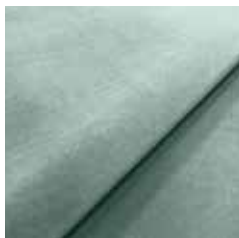
Olive



Turtle



Bottle Green



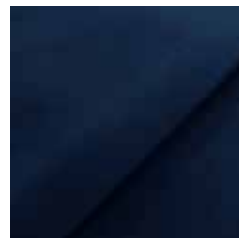
Mint



Turquoise



Sky Blue



Indigo



Chocolate

Story behind:

The VELVET collection is synonymous with refinement and softness. Velvet has delighted since its arrival in Europe, providing a royal feel. This highly tactile fabric, available in a soft color palette, fits a broad range of interiors, adding a touch of sophistication to any home. The fabric's special stain resistant coating makes it easy to clean.

Colors shades may slightly vary from dye-lot to dye-lot.

Fabric type: Velvet

Composition: 100% PES

Martindale abrasion: 100'000 cycles (cat. A)

Stain resistant: yes

Flame resistance: British BS 5852

Source 0 (Cigarette)

Wyzenbeek: 200,000 (cat. A)

Finishes

SHINE VELVET Collection - 13 colors



Creme



Taupe



Mustard



Sierra



Olive



Emerald



Mauve



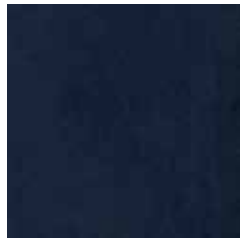
Bordeaux



Light Blue



Blue



Indigo



Chocolate



Black

Story behind:

The SHINE VELVET collection is synonymous with softness and chic. Velvet has delighted since its arrival in Europe, providing a royal feel. Shine Velvet is highly tactile fabric, available in a soft color palette. It's very shiny, thanks to it beautifully harmonizes with light, changing the shade depending on the time of day.

Colors shades may slightly vary from dye-lot to dye-lot.

Fabric type: French Velvet

Composition: 100% PES

Martindale abrasion: 115'000 cycles (cat. A)

Stain resistant: yes

Flame resistance: BS EN 1021-1 Ignition Source 0 (Cigarette), BS EN 1021-2 Ignition Source 1 (Match)

Finishes

CORD Collection - 9 colors



Creme



Taupe



Mustard



Grass



Bottle Green



Mint



Indigo



Cappuccino



Cacao

Story behind:

CORD fabric is very soft and pleasant to the touch, and at the same time an extremely strong and durable velor fabric with an interesting, albeit classic texture. Ideal as a cover of the whole piece of furniture, a single element or as a material for sublime and stylish accessories.

Fabric type: Velvet

Composition: 88% PES, 12 % PA

Martindale abrasion: 100'000 cycles (cat. A)

Colors shades may slightly vary from dye-lot to dye-lot.

Finishes

BOUCLE Collection - 16 colors



Snow



Creme



Camel



Beige



Mustard



Ginger



Sierra



Olive



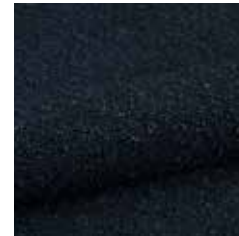
Bottle Green



Blue



Denim



Indigo



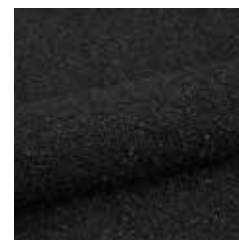
Chocolate



Mouse Grey



Graphite



Black

Story behind:

BOUCLE fabric is a material woven from yarns with an irregular structure, with knotty lugs that can create a cozy atmosphere. In this irregularity lies all the charm of boucle fabric - its surface is soft, warm and pleasant to the touch. It is coated with molecules and a hydrophobic coating that protects fabric from dirt and absorption of liquids. It also meets high quality standards Oeko-Tex Standard 100 certificate.

Colors shades may slightly vary from dye-lot to dye-lot.

Fabric type: Loop

Composition: 93% PES, 6% ACR, 1% COT

Martindale abrasion: > 100'000 cycles (cat. A)

Stain resistant: yes

Flame resistance: Cigarette Test PN-EN 1021-1:2014-12

Finishes

COCO Collection - 9 colors



Creme



Sand



Beige



Taupe



Mustard



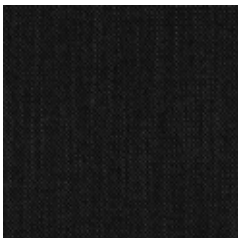
Olive



Jeans



Indigo



Black

Story behind:

Fabrics from the COCO collection are typical Scandinavian thick weave. The 366 Concept furniture in beiges and greys from this collection will be a complete match for both minimalistic, modern and sublime interiors.

Fabric type: Woven

Composition: 84% PES, 16% AC

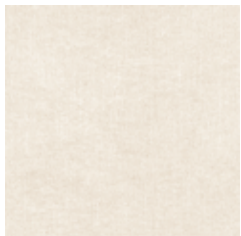
Martindale abrasion: 100'000 cycles (cat. A)

Flame resistance: BS EN 1021-1 Ignition Source 0 (Cigarette), BS EN 1021-2 Ignition Source 1 (Match)

Colors shades may slightly vary from dye-lot to dye-lot.

Finishes

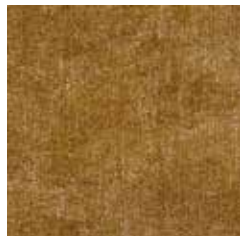
MARBLE Collection - 8 colors



White



Beige



Mustard



Orange



Light Blue



Bottle Green



Indigo



Black

Story behind:

Fabrics from the MARBLE collection are characterized by a unique structure, reminiscent of natural marble. There are no two identical pieces of this fabric. Thanks to it your furniture will be absolutely unique.

Fabric type: Chenille

Composition: 87% PES, 13% Rayon

Martindale abrasion: 45'000 cycles (cat. B)

Flame resistance: BS EN 1021-1 Ignition Source 0 (Cigarette), BS EN 1021-2 Ignition Source 1 (Match)

Colors shades may slightly vary from dye-lot to dye-lot.

Finishes

WOOL Collection - 12 colors



Sand



Light Mustard



Mustard



Orange Beige



Olive



Bottle Green



White Blue



Grey Blue



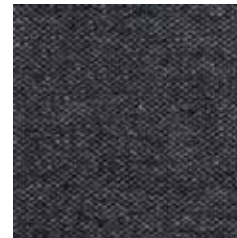
Turquoise



Jeans



Blue



Grey Black

Story behind:

The WOOL collection uses new-generation fabrics made from natural materials. Weaving long, smooth wild flax fibre between the wool creates a stunning two-tone color inspired by precious stones. The addition of flax makes wool fabrics less flammable, which means that they are ideal for commercial interiors, such as hotels or restaurants.

Fabric type: Woven

Composition: 75% VIRGIN WOOL, 25% FLAX

Martindale abrasion: > 50'000 cycles (cat. A)

Flame resistance: BS 7176 Low Hazard, NFPA 260 + UFAC Class 1

Colors shades may slightly vary from dye-lot to dye-lot.

Finishes

TEDDY Collection - 4 colors



Creme



Beige



Mustard



Cappuccino

Story behind:

The fabrics from one of the most fashionable TEDDY collection are characterized by delicate structure that resembles soft plush. What distinguishes them is knotted weave, high grammage and resistance to abrasion. Teddy looks prominent against the background of walls made of natural wood, raw brick, concrete or stone. Exceptionally soft texture and toned-down color range are ideal complement for rooms in boho style, as well as Scandinavian, where it adds a bit of warmth, coziness and lightness.

Fabric type: Loop

Composition: 100% PES

Martindale abrasion: > 50 000 cycles (cat. A)

Flame resistance: BS EN 1021-1 Ignition Source 0 (Cigarette) , BS EN 1021-2 Ignition Source 1 (Match)

Colors shades may slightly vary from dye-lot to dye-lot.

Finishes

BRAID Collection - 10 colors



Crema



Beige



Light Brown



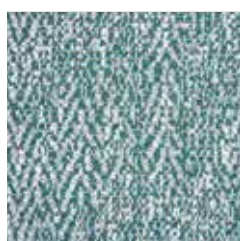
Mustard



Sierra



Olive



Emerald



Indigo



Brown



Black

Story behind:

The BRAID fabric has been appreciated by the greatest designers and interior architects. The colors from the collection emphasize the thick woven structure of the material that is pleasant and soft to the touch. Each color has an admixture of white which makes the fabric even lighter and warmer. Its thick braid weave makes furniture very cozy, and combined with the natural color of the wood, it will become an idyllic addition in your homes. The special finish of the fabrics protects them from the rapid seepage of liquids, or even effectively blocks the infiltration of dirt into the fabric.

Fabric type: Braid

Composition: 60% COT, 14% VI, 9% AC, 7% PES, 6% LI, 4% Other

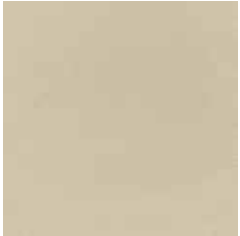
Martindale abrasion: 20'000 cycles (cat. A)

Fire resistance: BS 5852 Part I – Cigarette Test, EN 1021-1 – Cigarette Test, CA Tech. Bull. 117:2013 / NFPA 260

Colors shades may slightly vary from dye-lot to dye-lot.

Finishes

NATURAL LEATHER Collection - 6 colors



Creme



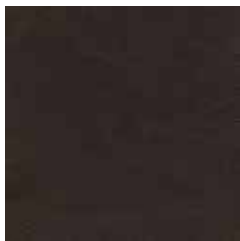
Light Blue



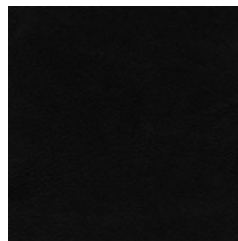
Cognac



Bottle Green



Mocca



Black

Story behind:

NATURAL LEATHER available in our collection is one of the best naturally and sustainably tanned leathers with rhubarb. Chromium-free leather tanning is a new, innovative way to obtain this noble raw material in an environmentally friendly manner. Natural leather can get dirty from fats, liquids or jeans.

Fabric type: Natural Leather

Composition: 100% Natural Leather dyed with rhubarb

Certificate: Member of the International Association of Natural Textiles (IVN e.V.)

Colors shades may slightly vary from dye-lot to dye-lot.